

# 多光谱热成像中型云台

MS-M

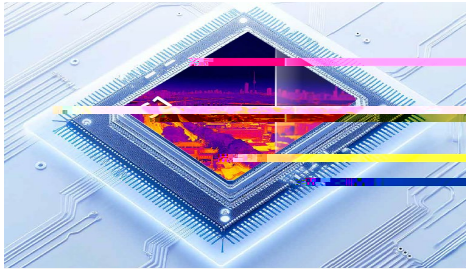
12

3km~6km

400

CMOS

24



ApexVision  
4



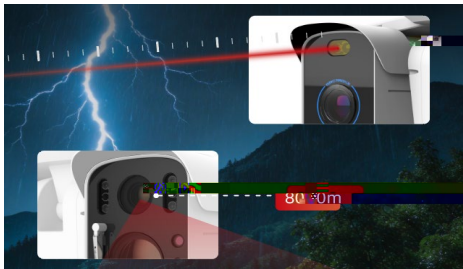
10Tops



6mm~336mm  
6 2m×2m



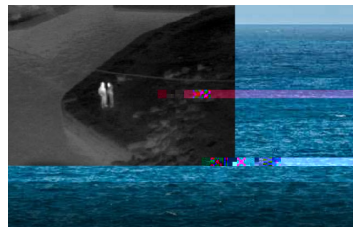
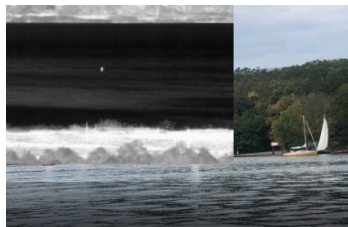
360°  
-90°~+40°



(800 )



IP66



	GD-TPC-PTZ26A4C (50mm)	GD-TPC-PTZ26A4C (75mm)	GD-TPC-PTZ26A4C (100mm)
	ApexVision S1 : ApexCore S1 + Nexus 1.0 + All-Scenario 1.0		
	640× m		
	1280×1024		
	°C		
	50mm (8.8°×7°)	75mm (5.86°×4.69°)	100mm (4.4°×3.52°)
	26		
	, 2D/3D		
	3000m ( 2m×2m)	4500m ( 2m×2m)	6000m ( 2m×2m)
	1/1.8" CMOS		
	2688×1520		
	: 0.001lux@f/1.6; : 0.0001lux@f/1.6		
	6mm-336mm; : 66° ( )-1.4° ( ); : 40.3° ( )-0.8° ( )		
	, 2D/3D		
	: 0°~360° ; : -90°~40°		
	: 0.1°/s 60°/s; : 0.1°/s 40°/s		
	H.265; H.264; MJPEG		
	JPEG		
	: 1280×1024/1280×720/640×512, 640×512/320×256; : 2688×1520/2560×1440/1920×1080/1280×720/704×576/352×288, 1280×720/704×576/352×288		
	HTTP; HTTPS; TCP; ARP; RTSP; RTP; UDP; RTCP; SMTP; FTP; DHCP; DNS; IPv4/v6; NTP		
	128G TF		
	/		
	20 , 2 :		
	; IP ; ;		
	( ), ( ),		
	DC48V±20%		
	1 , 100M		
	7 , 2		
	1 RS485, 1 1		
	-40°C~+70°C		
	IP66		
	40W; 130W		
	407.1mm×514mm×320.1mm		
	22kg		

